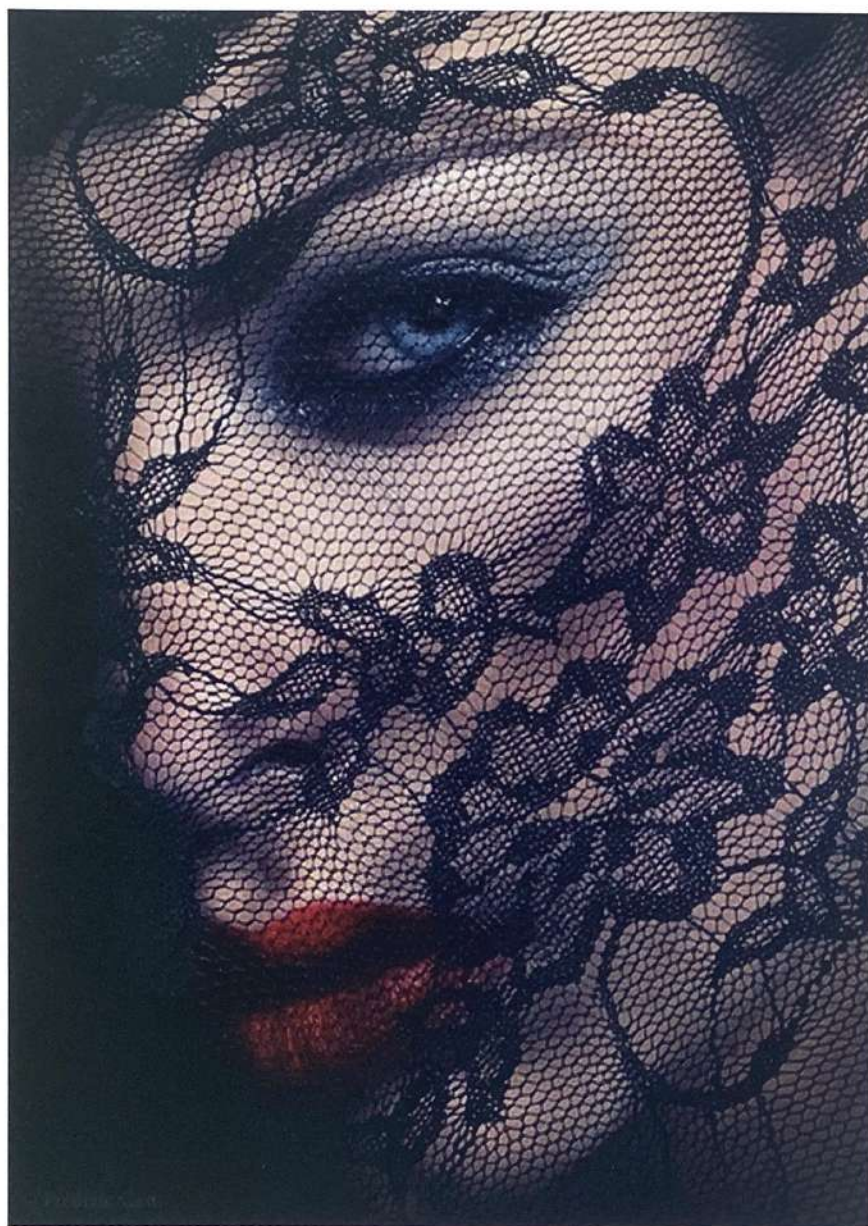




creativity experiences FW 22-23



CREATIVITY EXPERIENCES FW 22 23



Storie di passione

Seduzione, eleganza, libertà e passione le parole chiave che descrivono le atmosfere bohemien.

Tessuti organizzati, rasi lucenti si fondono a pezzi lasciando intravedere trasparenze maliziose.

Velluti, bouclé dalla mano morbida si accostano a bordure a contrasto e a passamenerie giocose.

Black e white si vestono di romanticismo, lasciando all'immaginazione il coraggio di andare contro corrente.

Stories of Passion

Seduction, elegance, freedom and passion are the keywords that describe the bohemian atmosphere.

Organized fabrics, shiny satins mix with lace, revealing mischievous transparencies.

Velvets, bouclé with a soft hand are combined with contrasting borders and playful passameneries.

Black and white are colored with romanticism, leaving to the imagination the courage to go against the tide.



C 1344 Dentelle 2 / Raso P - Elan 4 fili



C 1359 Maglia Burlesque - Arricciato



C 1332 Velour / C 259



C 1315 Seta Classic - Tubetto



P 677 Wool 2 / Pass. C - Lory



C 1343 Dentelle 2 - Arricciato Laterale



Elegance



P 678 Chiffon - Plissé



C 1346 S28 New - Arricciato 7 Cuciture



C 1349 Tulle C / A / F2 - Arricciato

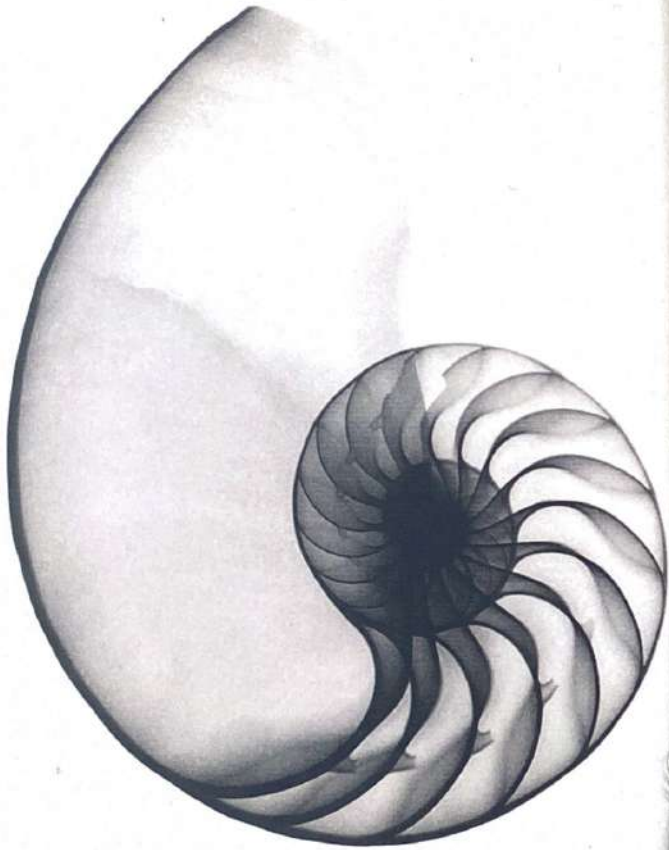


C 1315 Seta Classic - Tubetto



C 1327 Maglia Paillette - Arricciato Centrale

Seductions





P 679 Chiffon - Plissé



Roma 11 - Piegato



P 616 S 20 - Plisse

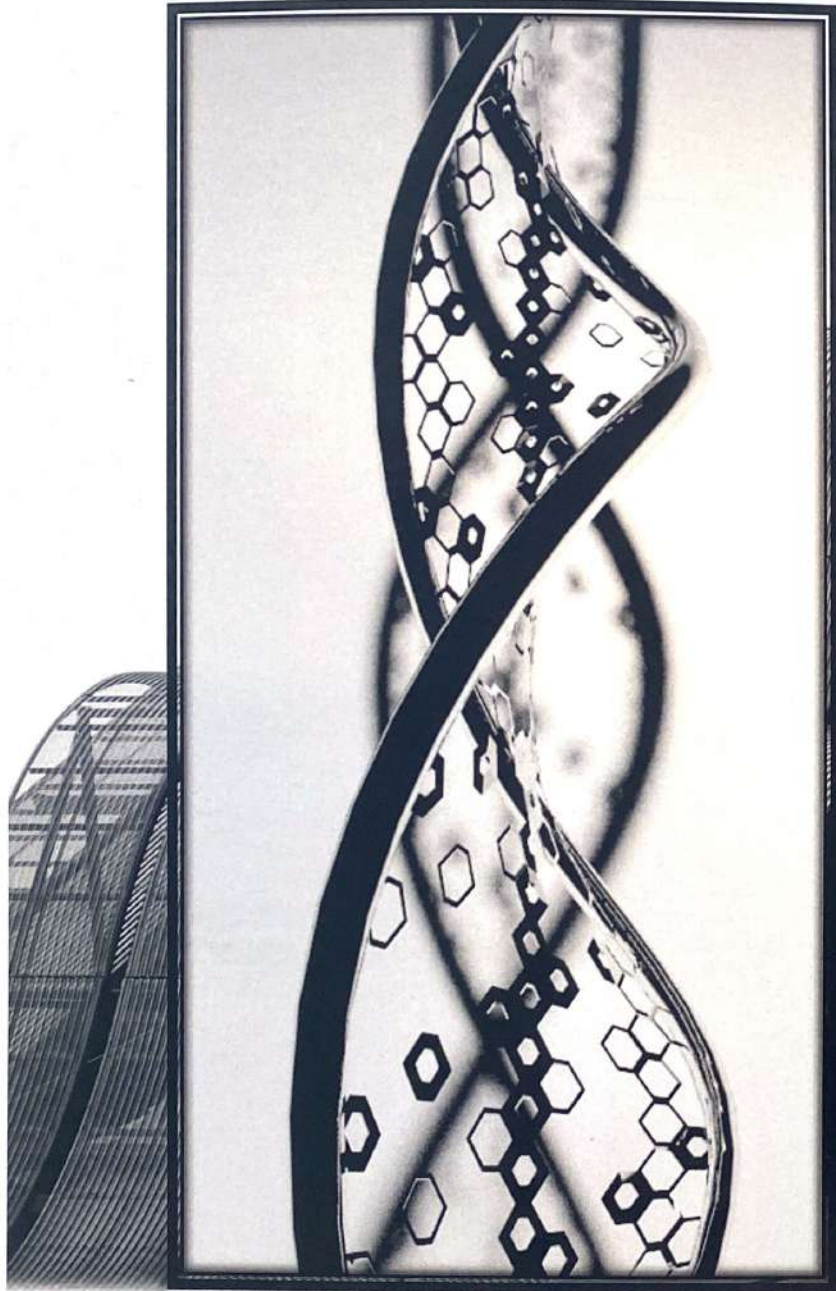


C 1403 Afef 3 / S 1 - Treccia



P 676 S 28 New - Nelly Doppio

Freedom





C 1348 Spinato / Pass.8471



P 675 Nuvola - Lory Dop



P 667 Tulle A - Giglio Doppio



C 836 Erik / Metal - Balza

Food Organico

*Ritorno alle origini, botanica, natura e gusto.
Le parole che danno vita all'innovativa corrente
fashion.*

*Texture dalla mano soffice, spessori corposi come panna
montata creano nuove abbinamenti di gusto.
L'Eleganza minimale si amalgama all'agreste dei
tessuti mossi Colori ice cream si fondono a nuance
botanic food dando vita a nuove esperienze sensoriali.*

Organic Food

*Back to the origins, botany, nature and taste.
The words that give life to the innovative fashion
trend.*

*Soft-hand textures, full-bodied thicknesses like
whipped cream create new combinations of taste.
Minimal elegance blends with the rustic texture of
wavy fabrics. Ice cream colors blend with botanic
food nuances, giving life to new sensory
experiences.*





C 1341 London - Tubetto 6 Fiocchi



P 648 Grosgrain PL - Nelly



C 1339 Melograno - Tubetto 2 Fiocchi



C 1333 Eugenia / Rete L - Tubetto 1 Fiocco



C 1322 Formentera / Spongy - Corsia



C 1356 NL - Girocoppe

Gusto





P 673 Velour / Pass.D - Nelly PL



P 674 S28 New - Nelly M



C 1323 S 27 - Mignon



C 1311 London - Tubetto 4 Fiocchi



Roma 11 - Piegato



C 1315 Seta Classic - Tubetto

Botanic





C 1357 Coco 2 - Arricciato Elasticizzato 5 Cuc.



C 1310 Tulle A - Arricciato



C 1340 Melograno - Tubetto



Roma 13 - Piegato Chiuso



P 579 Roma 11 - Lory Sorfilato



C 1358 Erik / Ibiza - Balza



Bellezza Tattile

...perfezione, narcisismo, fisicità e curvy i concetti su cui si basa il nuovo mood FW 22/23.

Tema centrale... il corpo in tutte le sue forme e colori.

Texture lisce dalle sfumature tie dye, velour plissetati e goffature materiche si vestono di tonalità skin color rosa cipria e a cromie ambrate...

Tactile Beauty

...perfection, narcissism, physicality and curvy are the concepts on which the new FW 22/23 mood revolves.

Central theme... the body in all its shapes and colors.

Smooth textures with tie-dye shades, pleated velvet, embossed fabrics in pink color and amber shades...



C 1360 S 9 - Frangia



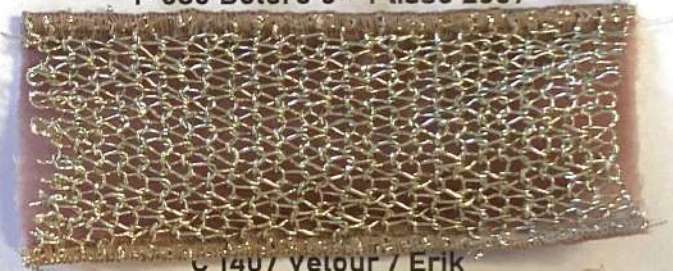
C 1341 London - Tubetto 6 Fiocchi



P 673 Velour / Pass.C - Nelly



P 686 Bolero 6 - Plissé 2009



C 1407 Velour / ERIK



P 687 London - Plisse

Narcissis





C 1361 Maglia Puffy / Grosgrain / Eldo



P 690 Velour - Plissé 2009



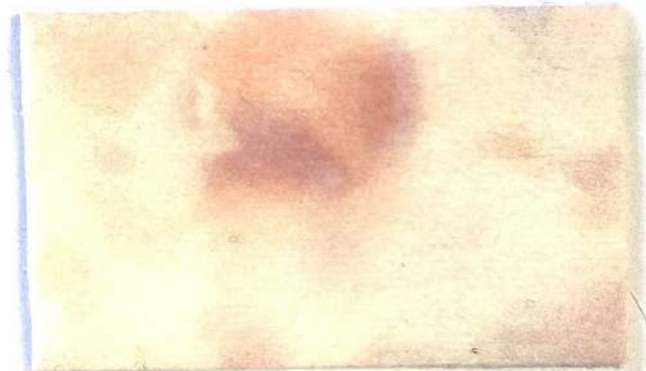
P 688 Roma 11 - Nelly



P 689 Spritz / Pass.C - Nelly Doppio

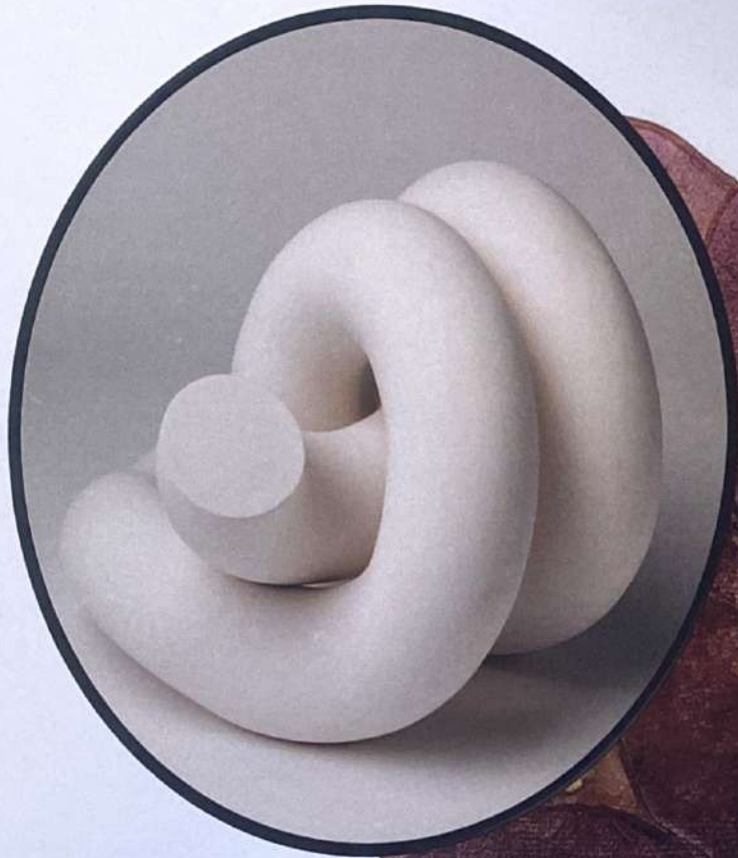


C 1362 Velour / C259



C 1363 Felix Stretch ST

Physicality





C 1364 Sangallo ST / Cedro - Banda



Pigalle - Profilo



C 1366 Eugenia / 2 Fiocchi / Cord P - Tubetto



C 1367 Omero 1 - Stampa

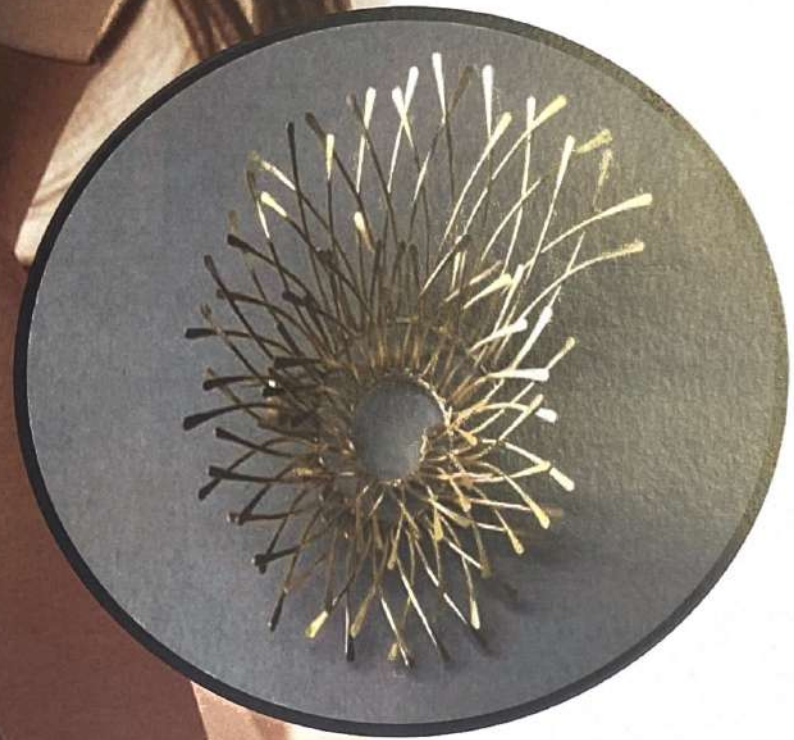


C 1368 Sirena - Piegato



C 1369 Wool 2 / Raso P - Banda

Perfection





C 1433 Paillette 7 / Tulle A Lat



C 1408 S 4 New - Tubetto



C 1421 Galaxy - Piegato



C 1434 Raso P / 6931 / Raso P



C 1417 Galaxy - Tubetto 1 Fiocco



C 1435 Maglia Puffy - Elan



Tocco Virtuale

Virtuale, funzionale, dipendenza, hi-tech. questi i concetti per questo inverno 22/23.

Tessuti PVC si accostano a jersey creando movimento 3D, frange iridescenti, intrecci tecno e finiture catarinfrangenti portano a nuovi giochi virtuali.

Le cromie tipiche dell'hi-tech si mescolano a tonalità elettriche e a inserti fluo.

Virtual Touch

Virtual, functional, addictive, hi-tech. these are the concepts for this winter 22/23.

PVC fabrics are combined with jersey creating 3D movement, iridescent fringes, techno weaves and reflective finishes lead to new virtual games.

The typical hi-tech colors are mixed with electric shades and fluorescent inserts.



C 1370 Tano 41 - Frangia



C 1371 Bolero 6 - Tubolare 1 Fiocco



C 1373 Ibiza / Tano 2 - Elan 4 Cuc.



C 1372 Ibiza ST / Spongy - Banda

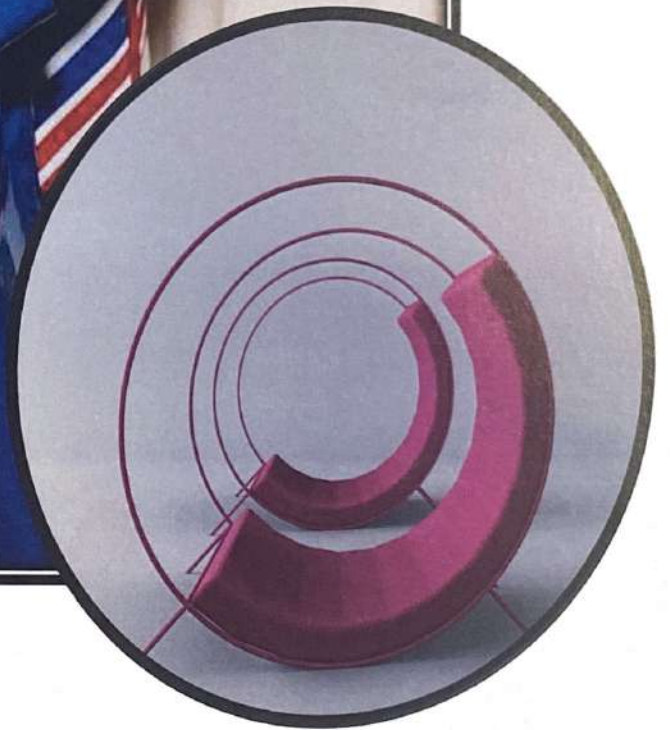
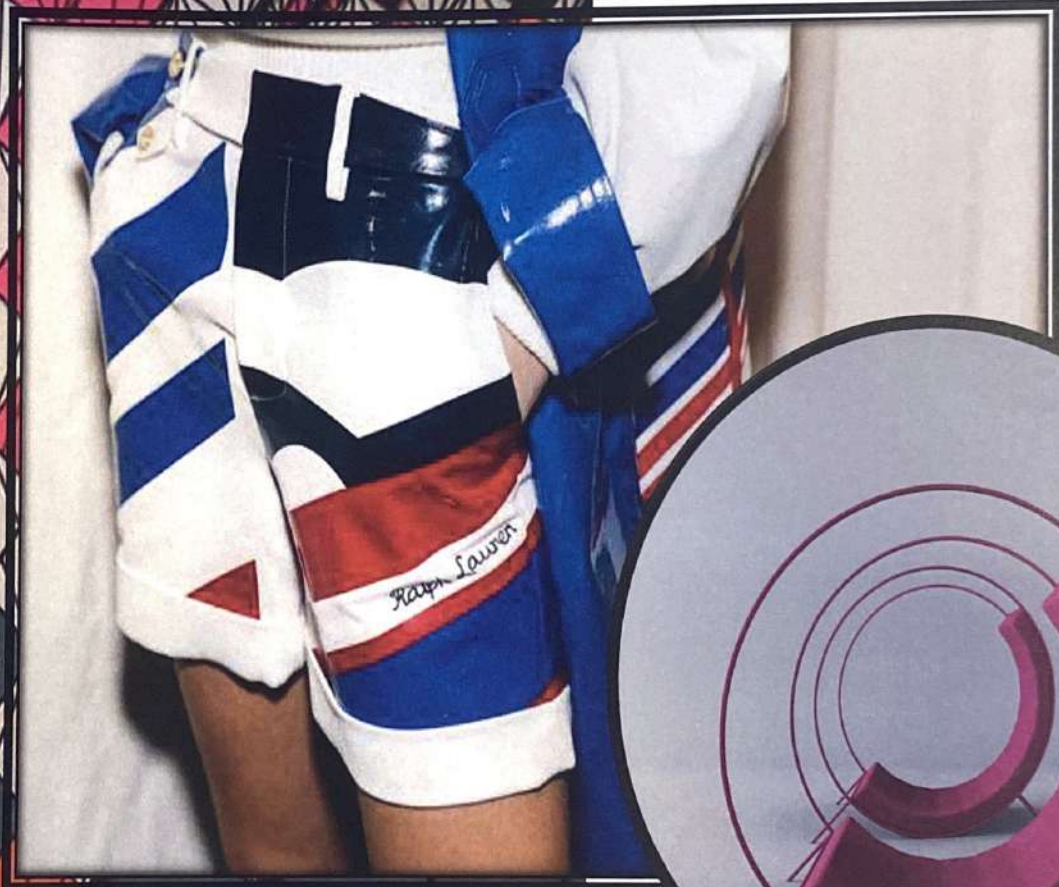


C 1374 NL 6931 / Mambo - Binario



C 1375 Nylon Iron / Riflettente C - Banda

Functional





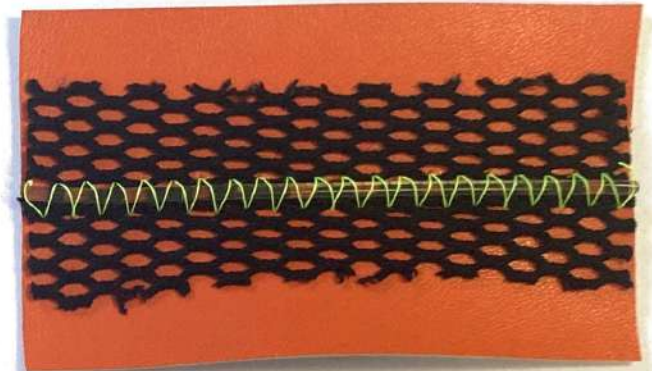
C 1378 Galles 11 / CDR - Arricciato



C 1323 S 27 - Mignon



C 1379 Gros / Ramon / TreD 10 - Banda



C 1380 S 27 / TreD 12 / Tondino - Banda



C 1381 Eugenia / Fiocco - Profilo Bic



C 1382 S 4 - Banda Termosald

Hi-Tech





C 1376 S 1 - Plissé



P 691 S 7 - Plissé 2009



P 692 Mirror - Nelly Z Cuc.



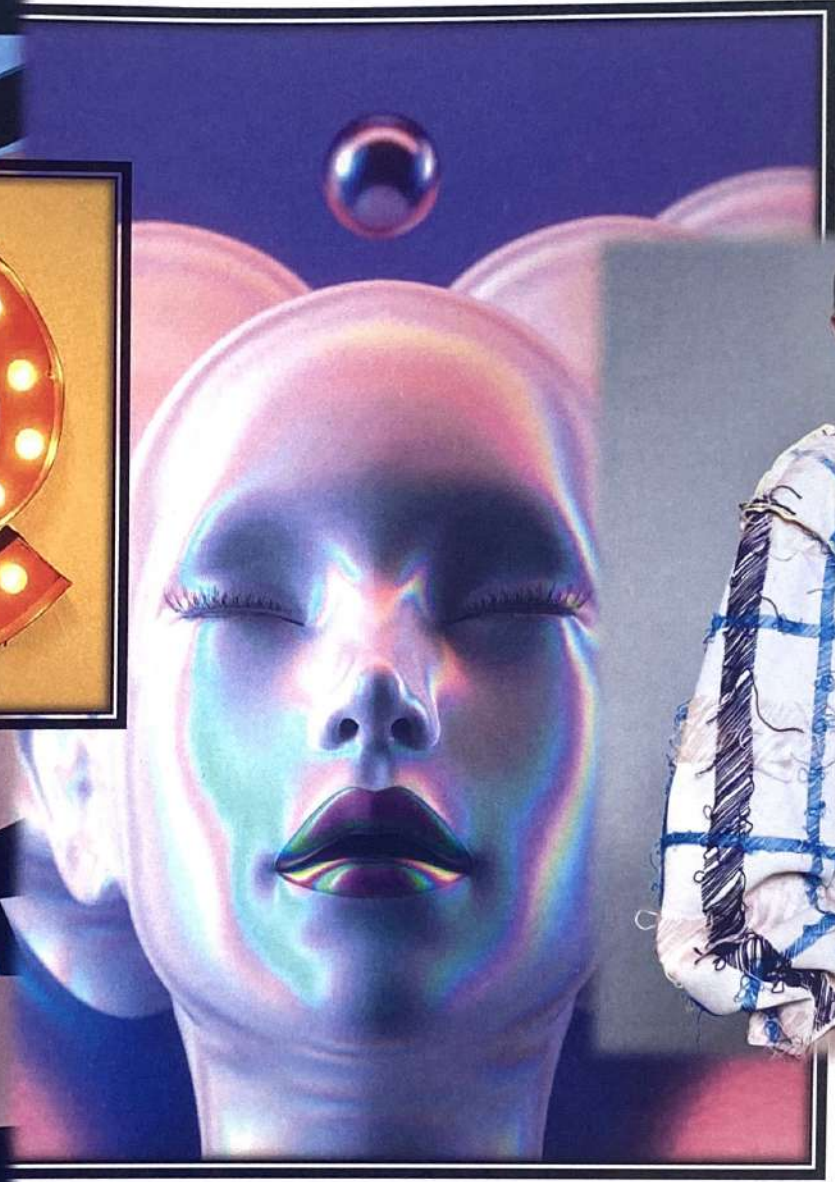
P 689 Spritz / Pass.C - Nelly Doppio



C 1377 Ibiza / Cord.A - Tubetto



P 693 S 28 New ST - Nelly



Addiction





C 1424 Scotland / Tulle Even - Impunturato



C 1425 Ibiza - Tubetto / HY45 NK



C 1426 Ibiza / Honolulu



C 1369 Wool 2 / Raso P



C 1408 S 4 New - Tubetto



C 1427 S28 New - Tubetto 2 Fiocchi



Linee ecologiche

Riciclo , etica , educazione , rinascita.

*L'Ecologia diventa un imperativo di vita , il riutilizzo
ispira cambi di destinazione d'uso , artigianalità e
industria si fondono.*

*Texture ricamate dalle stampe tridimensionali si
combinano a jacquard ramage , i check sono micro e i
plisse ricordano le nervature delle foglie , macro tubolari e
cordoni riportano a sensazioni vintage.*

*Tra i colori il verde in tutte le sue declinazioni si accosta
a colori caldi della madre terra.*

Ecological lines

Recycling, ethics, education, rebirth.

*Ecology becomes an imperative in life, reuse inspires changes
in the intended use, craftsmanship and industry merge.*

*Textures embroidered with three-dimensional prints are
combined with ramage jacquard, the squares are micro and
the folds recall the veins of the leaves, macro tubulars and cords
bring back vintage sensations.*

*Among the colors, green in all its variations matches the warm
colors of mother earth.*



P 694 Denim 1 - Plissè Onda



C 1383 Denim 6 - Corsia Impunt.

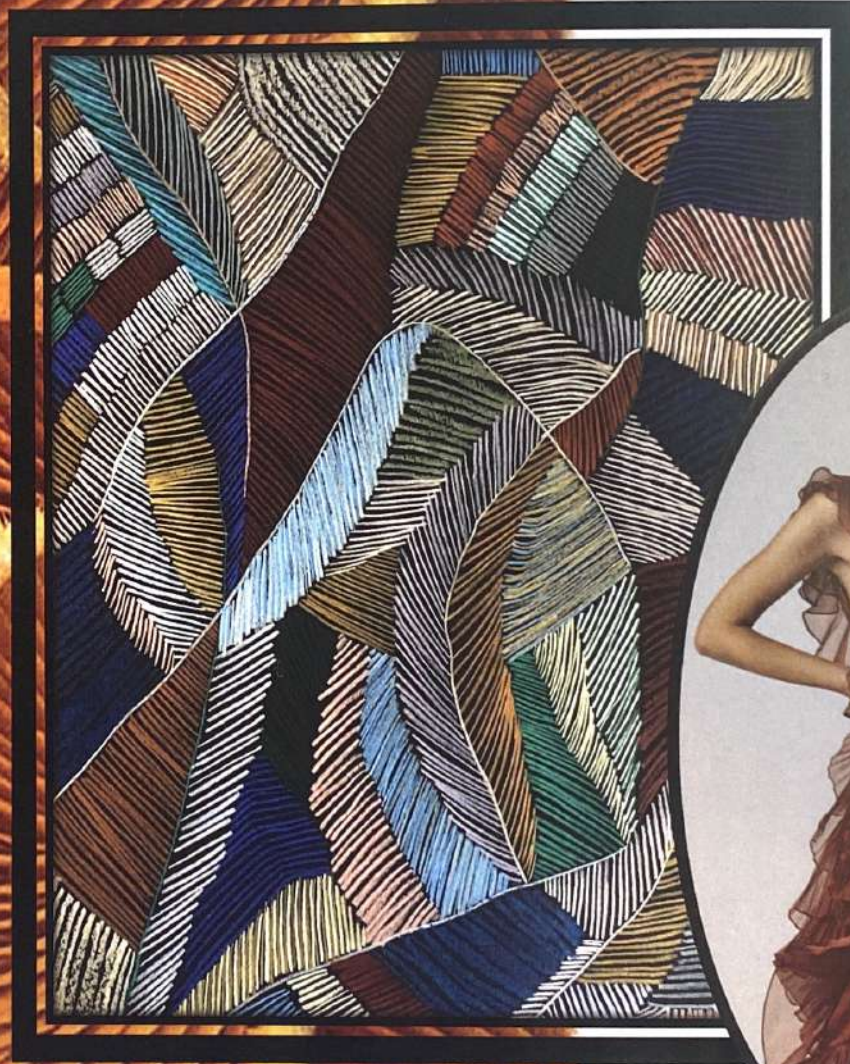


C 1384 Oasis - Tubetto



C 1385 Barolo Fiore Stampato

Education





P 697 Raso B - Plissé - 1 U



C 1391 Oasis - Profilo 3 Colori



C 1392 Bouclè / Grosgrain - Gigi



C 1393 Ondina - Profilo



C 1408 S 4 New - Tubetto



C 1394 Oasis / Ovatta - Corsia

Ethics





P 695 Roma 15 - Nelly



C 1386 Oasis - Profilo



C 1387 Barolo Foglia ST

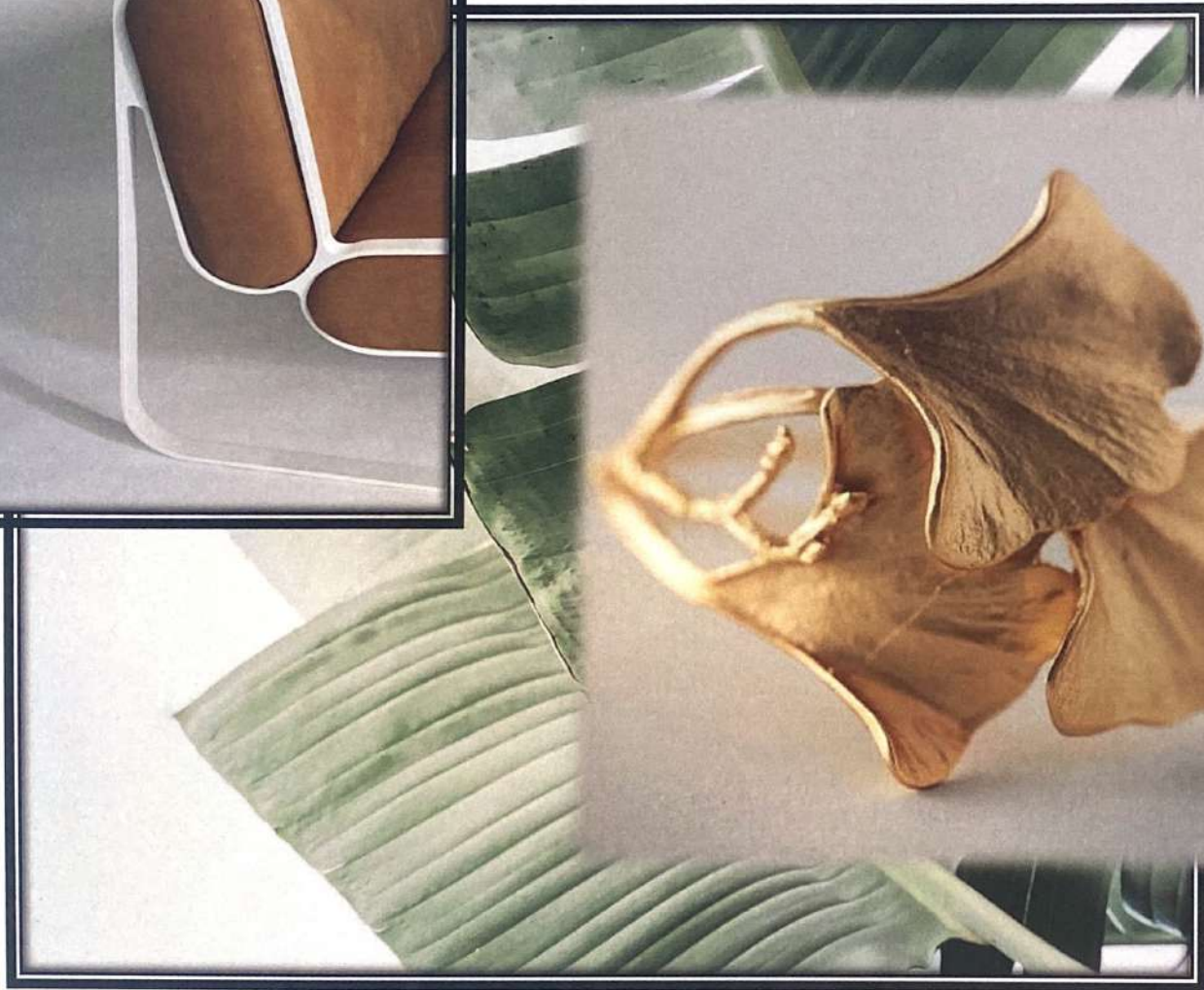


C 1388 Zarina / Spinato 1 - Profilo



C 1390 Zarina - Tubetto

Rebirth





P 702 Lamè 2 /Plissè Foglia



C 1362 Velour / C259



P 703 Denim 14 - Farfalla



C 1436 Roma 15 - Profilo



C 1432 Galaxy - Tubetto



Second Hand





P 700 Gros - Plissé 1U



C 1408 S4 New - Tubetto



P 701 Sparta - Plissé



C 1429 Roma 15 - Profilo

Atmosfera

Gioia, festa, magia, regali

Il natale si traduce in texture macro check, nastri glitter su velluti plissettati, micro bouclé e disegni tartan.

Morbidi panni arricchiti da bordi piping animati in contrasti nuance.

I colori hanno tonalità festose, rossi, bordeaux, bianchi e neri arricchiti da nuances gold.

Atmosphere

Joy, celebration, magic, gifts

Christmas translates into macro check textures, glittery ribbons on pleated velvets, micro bouclé and tartan patterns.

Soft cloths enriched with piping borders in contrasting shades.

The colors have festive shades, red, burgundy, white and black enriched with gold nuances.





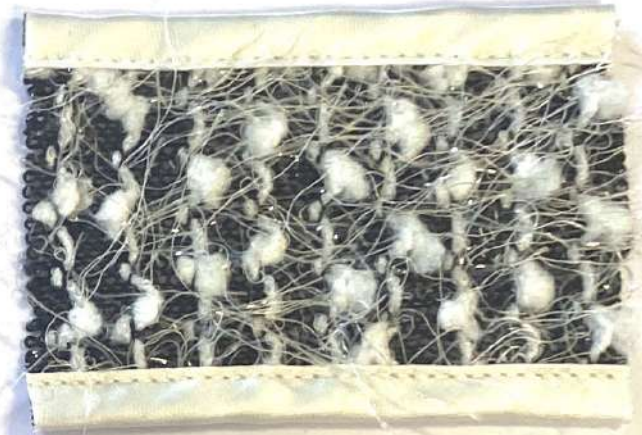
C 1395 Wool 2 - Banda / Mirror - Profilo



P 696 Ask - Plissé 2009



C 1396 Passam. 6957 / Doppio Raso



C 1397 Bourlesque / Raso B - Banda

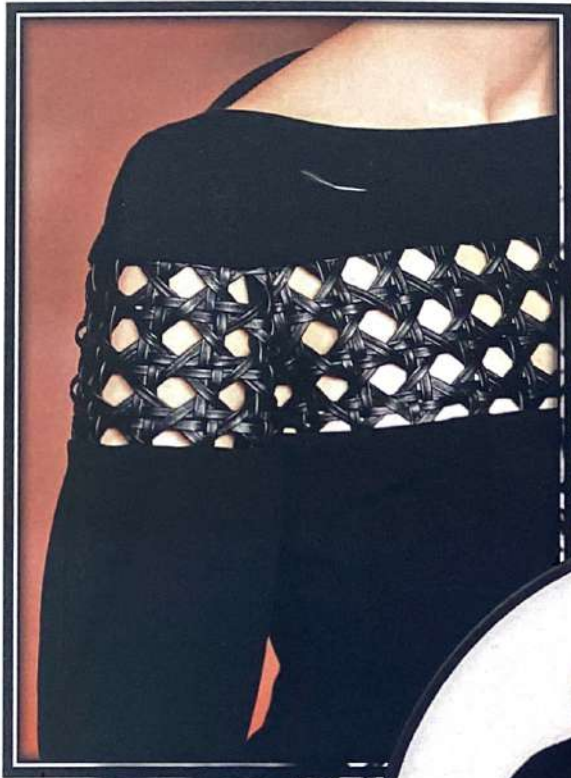


C 1398 S 1 - Coda Di Topo



C 1399 Maglia Paillettes / Tubetto 1 Fiocco

Party





P 698 Velour / Doppio Raso / Eldo - Bordo - Nelly



C 1400 Roma 11 - Tubetto



C 1401 Roma 11 / Ask / Spongy - Banda



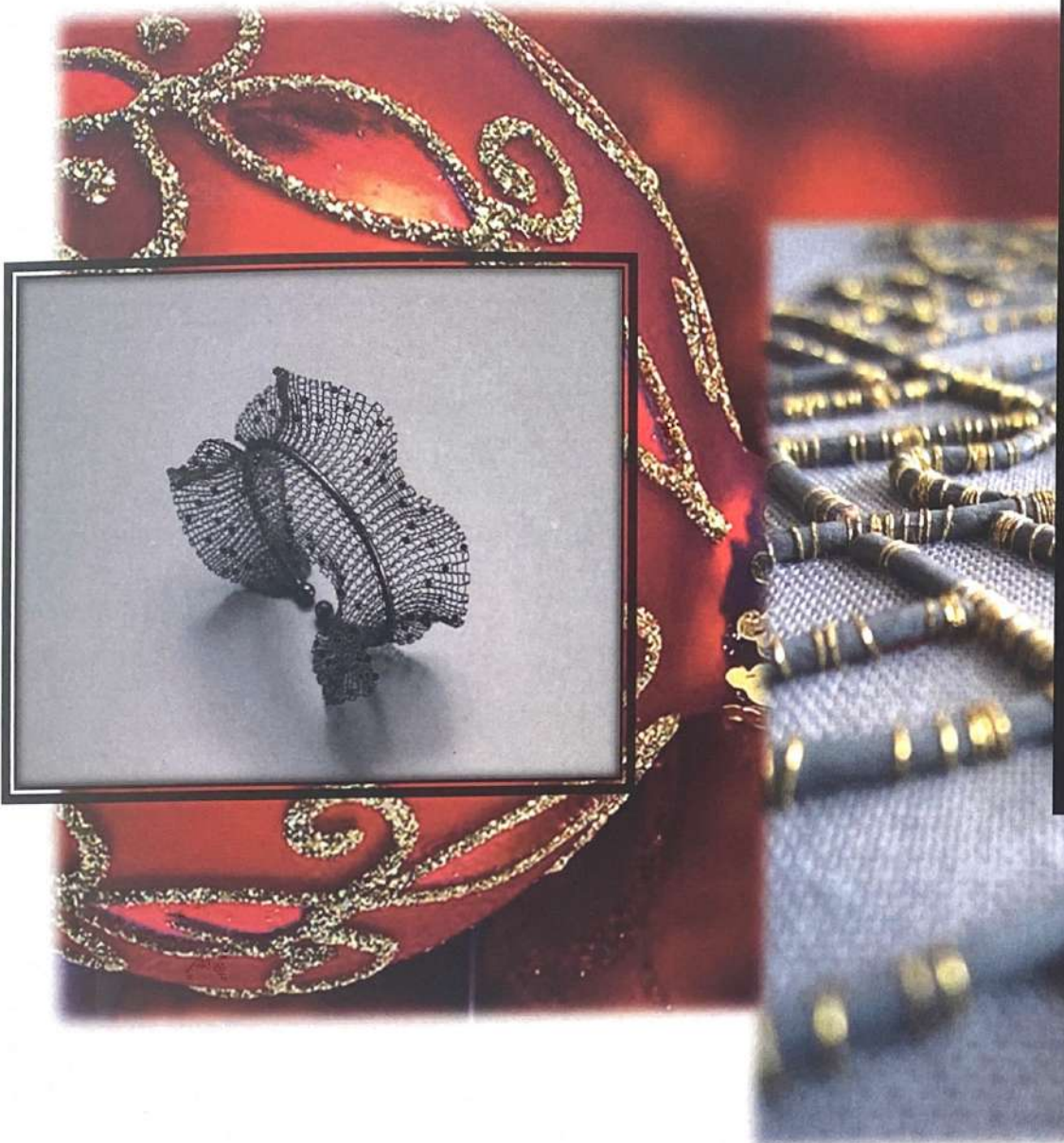
C 1396 Passam.6957 / Doppio Raso



S 1 - Tubetto



C 1402 Bouclè / Betulla - Banda



Family



C 1418 Paillette T / Tulle A - Cent.



C 1419 Ask - Tubetto / Y102 Oro



C 1421 Galaxy - Piegato



C 1420 Tulle Spillo



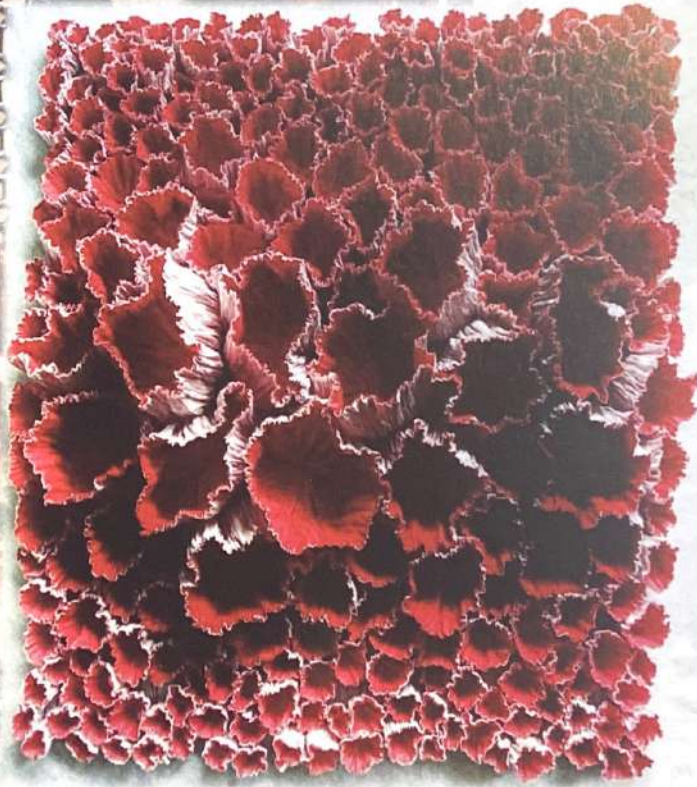
C 1422 Cannetè - Banda Impunt.



C 1423 Wool 2 - Impuntura Oro



Happiness





C 1428 Dentelle 10 / Tulle A



C 1417 Galaxy - Tubetto 1 Fiocco



C 1430 Giuly / Oasis



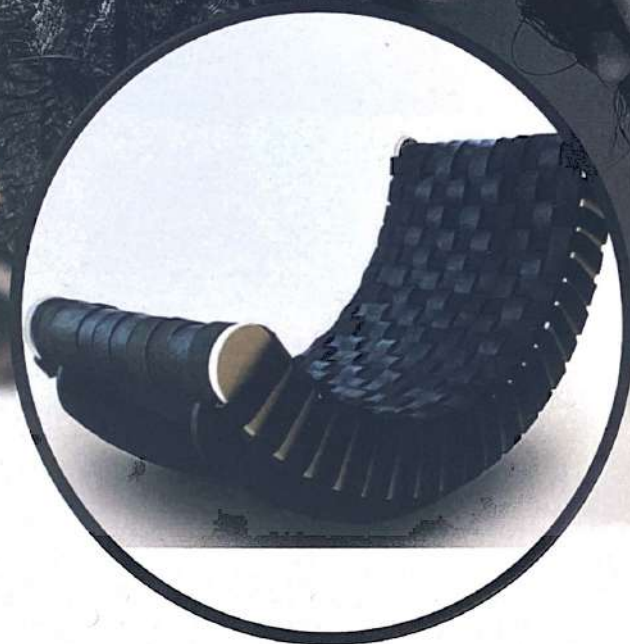
C 1420 Tulle Spillo



C 1431 Raso P / 6931 / Lamè 11



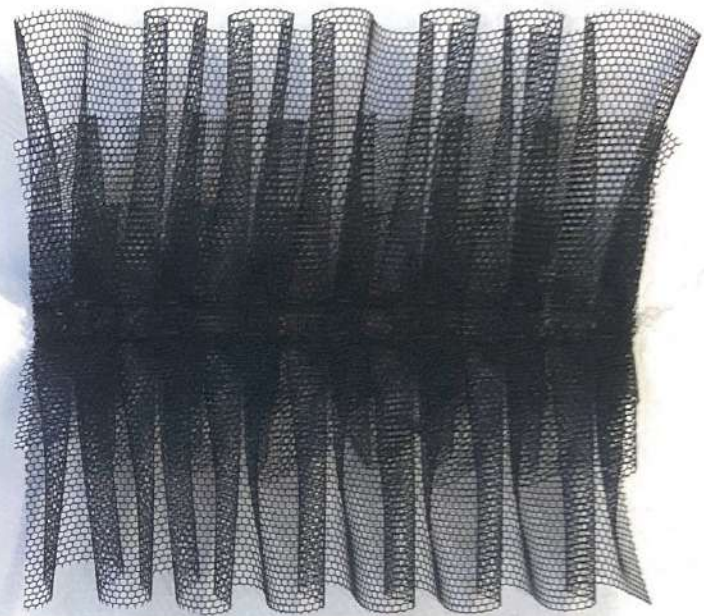
C 1432 Galaxy - Tubetto



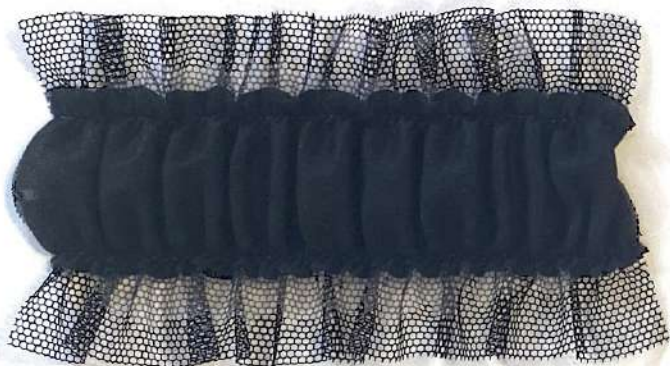
Surprise



C 1404 Spinato / Zivago - Banda



P 699 Tulle A - Giglio

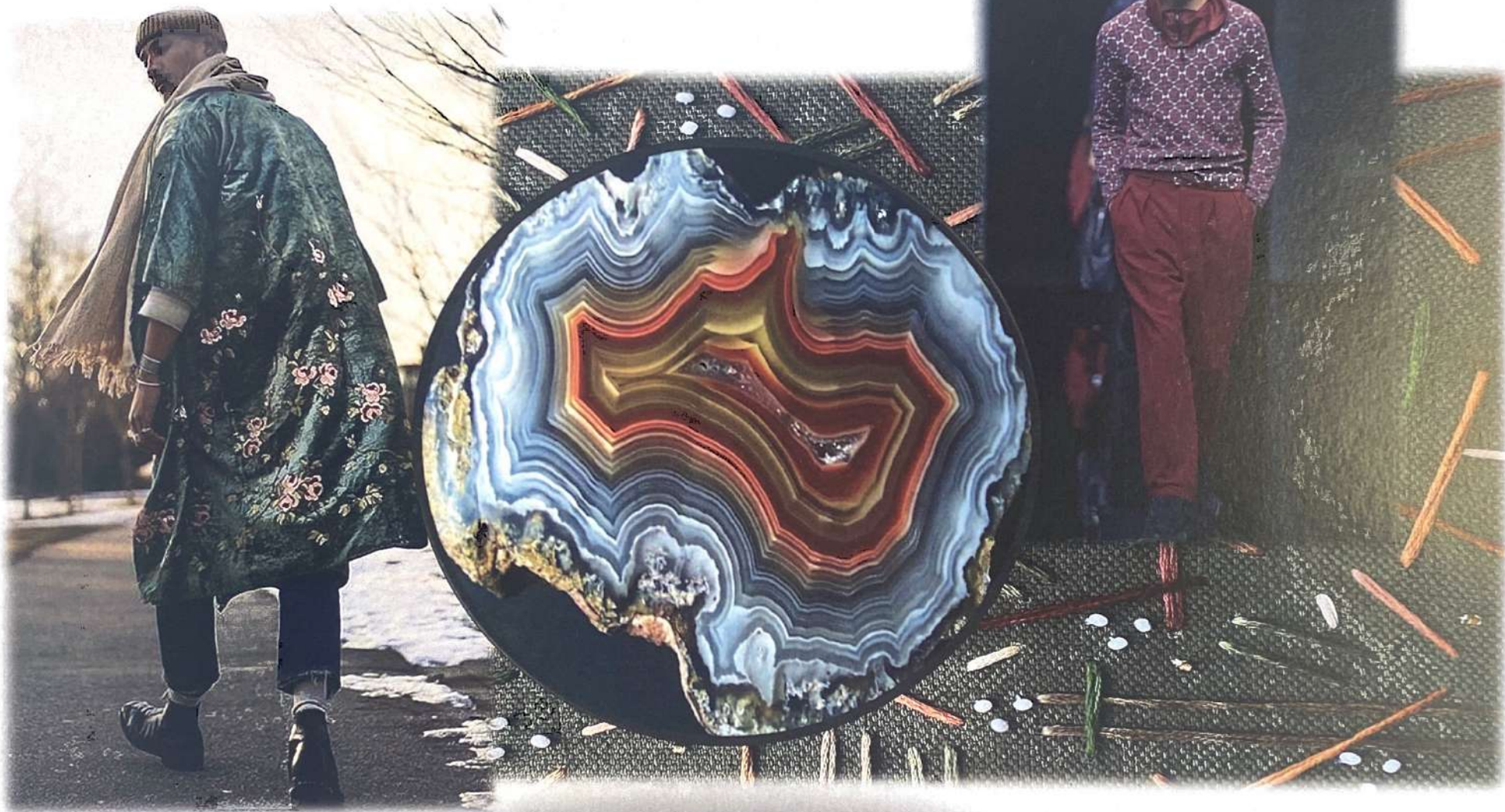


C 1405 Tulle A / Voile - Arricciato



C 1406 Lamè 22 / Zarina - Treccia

Narcissism





CP Oasis - Norma Impunt.



CP Mimetico / Oasis - Patrizia

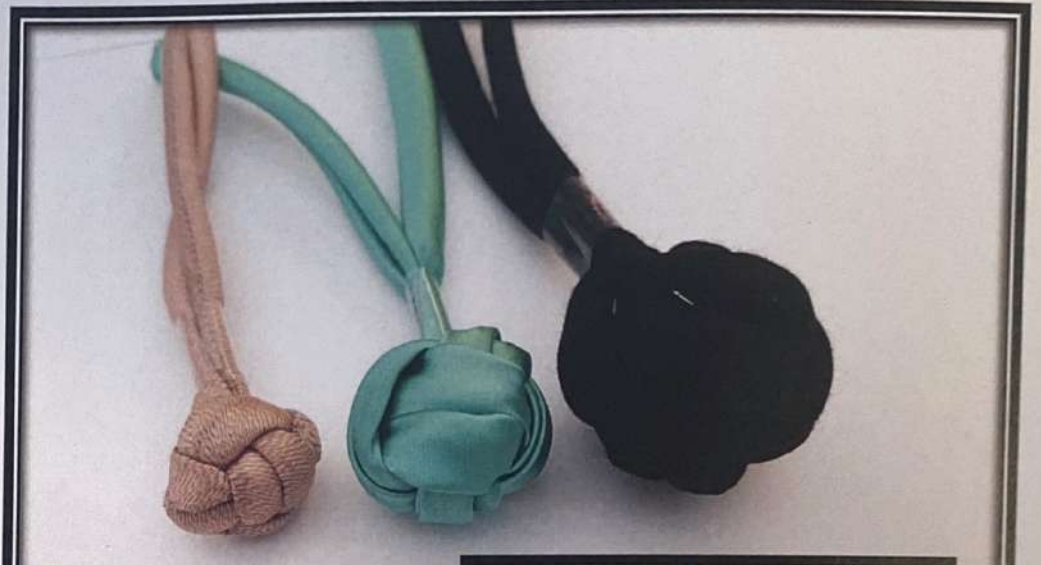
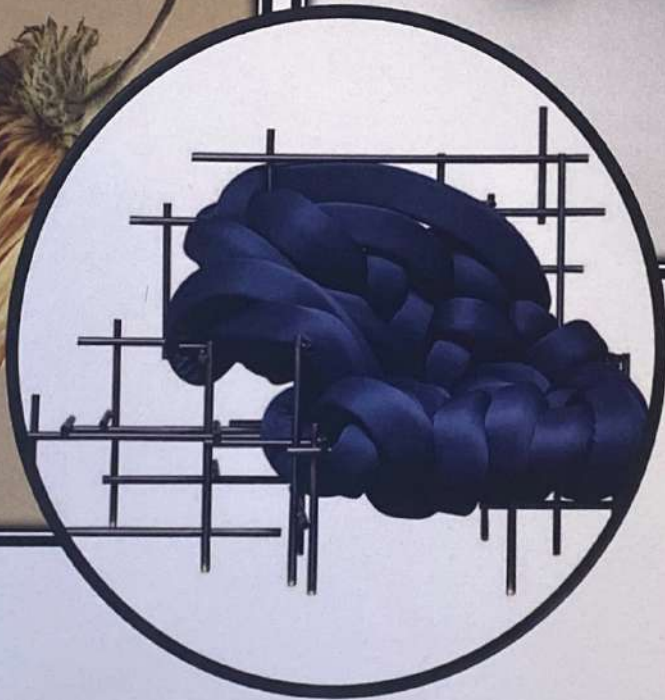


CP Vintage / S39 - Patrizia



CP Ask / Ask - Norma

Accessories





C 1409 S28 - Tubetto / Puntale HY45NK



C 1410 S1 - Scubi / Puntale P HY45CF



C 1411 Ask L - Tubetto / Puntale J102CF



C 1413 Lamè 8 P - Pugno Di Scimmia



C 1414 S23 M - Pugno Di Scimmia



C 1415 S39 M - Pugno Di Scimmia



CREATIVITY EXPERIENCES FW 22 23

TOPP ITALIA 

INSPIRED BY TEXTILES tel. +39 030 99 35 054 / www.toppitalia.it / info@toppitalia.it / export@toppitalia.it